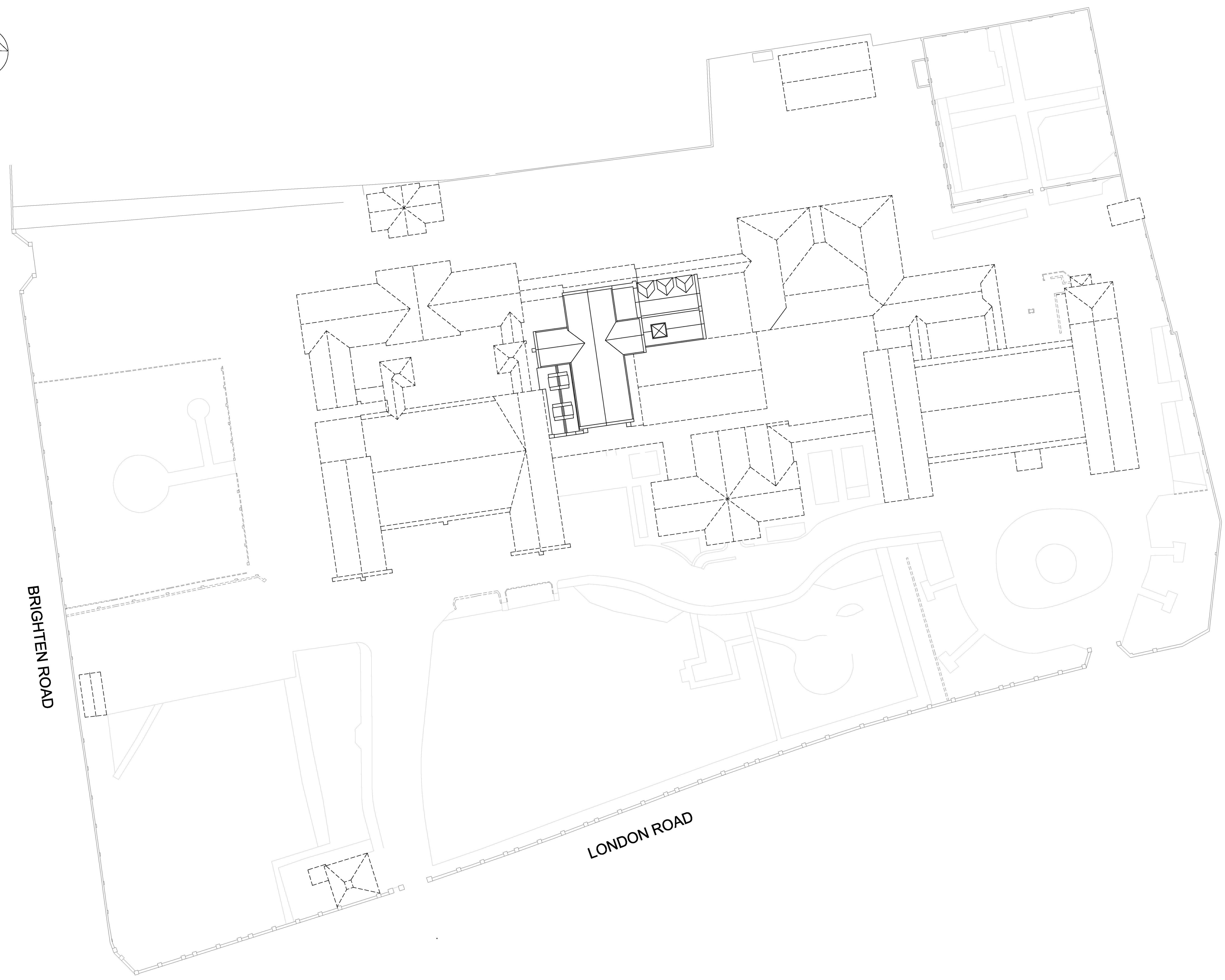
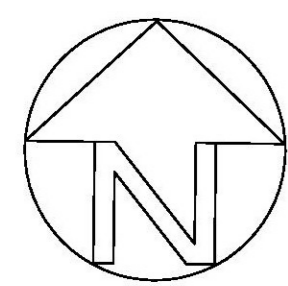


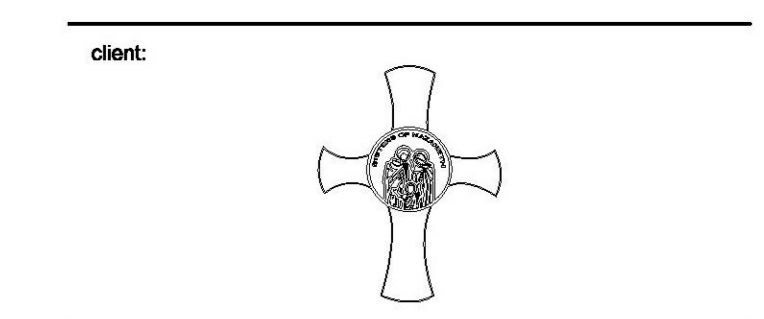
general notes:  
 Do not scale from this drawing - use figure dimensions only. Unless otherwise noted all dimensions are given in millimetres.  
 All dimensions must be verified on site before the commencement of work or the fabrication of any item. Any discrepancies must be reported to the Architect.  
 All risks assessed to comply with the designers responsibility under the construction (design and management) regulations 2015.

legend:  
 Buildings to be demolished  
 Buildings to be retained



rev.	revision notes:	by:	date:

dwg status:



**Scurr Architects**  
 88 Southdown Road  
 Harpenden  
 Hertfordshire  
 AL5 1PR  
 T: 01582 703989  
 email: scurr@scurr.co.uk  
 www.scurr.co.uk

architects ■ designers ■ project managers

drawn by: MCA    drawn date: MAY 2018    checked/approved: MCA    scale: 1:200@A0

project title:  
**NAZARETH HOUSE**  
**LONDON ROAD**  
**SOUTHEND-ON-SEA**  
 dwg title:  
**DEMOLITION PLAN**

dwg no:  
**7102-PL-011**

© Copyright Scurr Architects